

GENERAL ACCESS DESCRIPTORS - TINAROO EEC - BARRON RIVER CAMPUS

Car/coach set down -

- Inside facility grounds
- Adequate outdoor lighting
- Not undercover
- Car set-down adjacent to accessible building entrances
- Coach set-down 15 m to accessible building entrances
- Asphalt & concrete surfaces
- adequate circulation space for wheelchair/equipment set-down
- Designated 'Person with a Disability' parking bay



Pathways - Formed

- Formed pathways between Main Building and all other buildings and facilities including student toilet blocks
- Most of the pathways are covered
- At least 1200mm wide for the full length
- Smooth, firm and slip resistant in wet & dry weather
- Level with adjacent ground
- For best wheeled mobility route
 - Minimal cross slope less than 1 in 40
 - No grates or small abrupt changes in levels



Pathways - Undefined Natural

- Between buildings and outdoor activities
 - Surfaces can be mud/sand/roots/grass/crusher dust
 - Cross slope less than 1 in 40 - relatively level site
 - Activity areas all have access alternatives

MAIN BUILDING - FOYER, CLASSROOM, ASSEMBLY ROOM, DINING, UNISEX PERSON WITH A DISABILITY TOILET/SHOWER

Floor Surfaces -

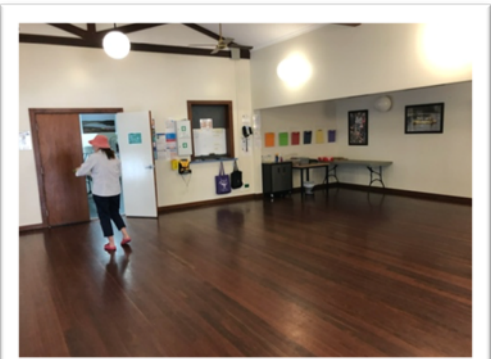
- Carpets - low pile, fixed edges
- Vinyl - non-slip (even when wet)
- Timber - internal can be slippery when wet, ramp non slip strips.
- Concrete - slightly textured
- Change of floor trims <3mm
- Drain covers flush with floor

General Lighting -

- All external lighting adequate and on timers
- All internal lighting adequate, switches standard & logically placed

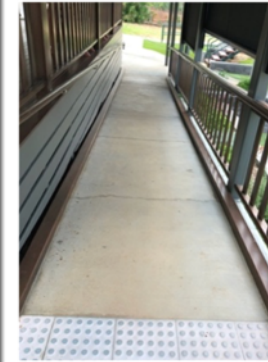
Doors & Passageways -

- External doors 850mm+ wide
 - Lever handles, heavily sprung - pinned open
 - Safety glass, contrast strip on glass doors
 - Adequate circulation space either side, threshold level
- Passageways and corridors at least 1200mm wide
- White door foyer to classroom - 920mm wide
- Timber door classroom to assembly room - 800mm wide



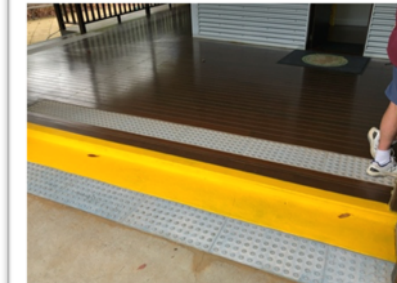
Ramps -

- Gradient 1:15 lower concrete & 1:18 upper timber
- At least 1000mm wide
- Suitable for assisted wheelchair user
- Surface firm, slip resistant, no gaps
- Rails both sides
 - No kerbs



Stairs and steps -

- Stairways at least 1000mm wide
- Tread widths consistent for flight
- Contrast nosings
- Suitable handrails (both or left descending)
- Sufficient light at all times



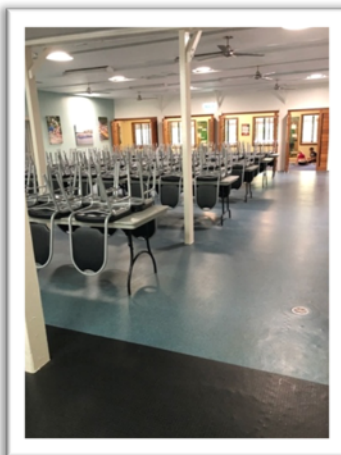
Dining room - outdoor dining

- Handwashing on verandah
 - Lever tap, soap and wheelchair access under basin



Dining room - indoor dining

- Clear space to manoeuvre wheelchair around tables
- Tables allow wheelchair to be pushed underneath
 - fixed height 740mm above ground
- Chairs have backrest, no armrest
 - Same size 450mm seat height
- Bain Marie, Servery, Breakfast Bar
 - 880-900mm above floor
 - No open area under for wheelchair user
 - Clear labels

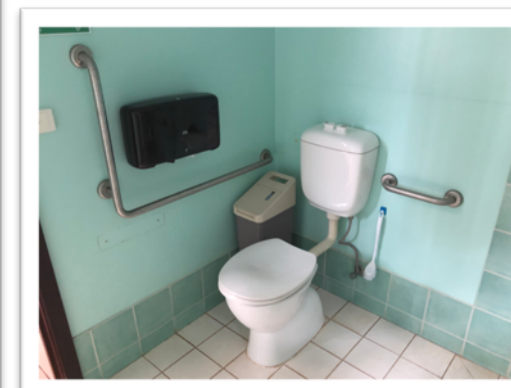


Toilet/Shower -

- Accessible unisex
 - Adjacent to the main office
 - Outward opening door 835mm wide, circulation space both sides
 - Floor area is 2360mm x 2350mm

Toilet -

- Standard pan & flush
- Grab rails
- Sanitary unit & toilet paper



Shower -

- preformed cubicle (600mm x 760mm) with integrated hob (height= 220mm from outside, 130mm inside)
- capstan tap handles between 900mm and 1100mm above floor level
 - not identified as hot and cold
- shower curtain (not weighted)
- fixed overhead shower nozzle
- no grab rails
- adjacent drying area 1600mm x 1200mm

Handbasin -

- paper towel dispenser above
- separate hot and cold taps with capstan handles
 - not identified as cold and hot
- rubbish bin



ACCOMMODATION - WATER DRAGON and REDCLAW

Access -

- Inside facility grounds
- Outdoors natural lighting
- Not undercover
- Equipment set down 20 m to accessible building entrances
- Asphalt & concrete surfaces
- Adequate circulation space for wheelchair/equipment setdown
- No designated 'Person with a Disability' parking bays



Alternate set down area for equipment

WATER DRAGON ACCOMMODATION

General -

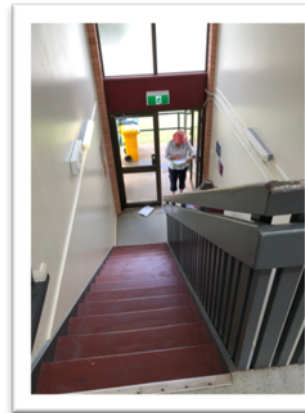
- Carer assist accommodation
- Access for manual and power wheelchairs ground floor
 - Locate same sex peers on ground floor with students using wheelchair
- Not suitable for mobile hoists
- Suitable floor surfaces - non slip vinyl and timber

Lighting -

- All external doorways are adequately lit
- Internal light switches logically placed but not level with door handle

Stairways -

- Stairways to 1st floor. 2 separate stairways internal and external (emergency exit only)
 - Steps are timber and standard in tread, width, height
 - Internal stairways are 900mm wide
 - Single hand rail
 - No contrast, colour or texture
- Adequate lighting



Ramps -

- 2 ramp entries
 - Surfaces firm and slip resistant in all conditions
 - Handrails both sides
 - At least 1000mm wide
- Ramp 1 to main entry door, covered,
 - gradient less than 1:14 (assisted wheelchair user)
- Ramp 2 to alternative entry, uncovered
 - Gradient less than 1:20 (independent wheelchair user)



Doorways -

- Opening doorways are 900mm wide
- Main entry door access via ramp, covered
 - threshold lip 15mm and outward opening
- no level landing



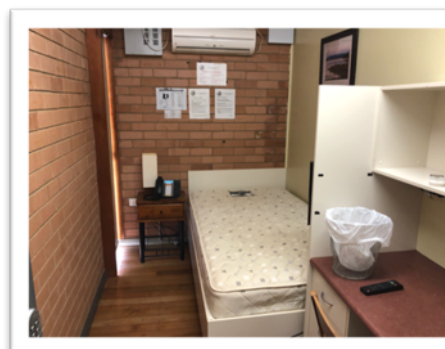
Bunk Rooms -

- Bunk beds - meets Australian standards.
 - 650mm headroom between upper and lower bunk
 - Accessible from both sides
 - Access to the length of the bunk
 - Bunks cannot be moved
- Passageway 1200mm wide plus handrail along wall
- Sufficient floor space to store mobility aids -
- Air-conditioning and window blinds available
- Power to charge Power Wheelchair overnight



Carer/teacher Rooms -

- 4 carer/teacher rooms on ground floor
- Single bed
 - access to full length of the bed on one side only
 - bed cannot be moved
- Limited space for storage of equipment
- Potential accommodation for a student



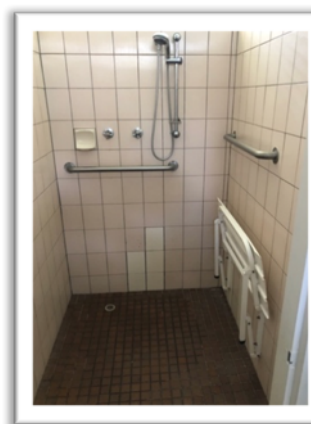
LOWER SHOWER BLOCK - ADJACENT TO WATER DRAGON

External Accessible Facilities -

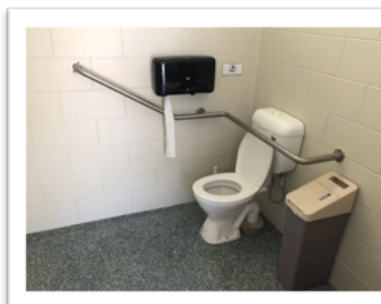
- Adjacent to shared student facilities
 - Unisex
 - 40m covered path from Water Dragon accommodation
 - Accessible for wheelchair, toilet/shower commode
 - Not suitable for hoist or change table
 - Doorways are 850mm wide
 - Non slip flooring
 - Hooks on back of shower & toilet doors



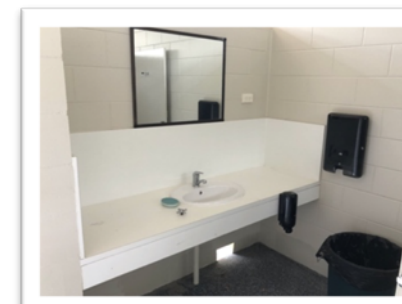
- Accessible shower
 - 1800 X 1300mm floor area
 - Door limits wet area and opens away from cubicle
 - Fold down shower seat & grab rails
 - Shower nozzle can be handheld or mounted
 - Capstan taps, hot cold indicators
 - No thermostatic mixing valve
 - Taps and rails higher than standard



- Accessible toilet
 - 1800 X 1800 floor area
 - Circulation space with door closed
 - Standard pan and grab rails
 - Sanitary unit & toilet paper



- Hand basin with mirror
 - Single lever style tap
- Soap and paper towel dispensers



REDCLAW ACCOMMODATION

General -

- Carer assist accommodation
- Access for smaller wheelchairs (<760mm wide)
- Suitable for mobile hoists
- Passageway 1200mm wide plus handrail along wall

Lighting -

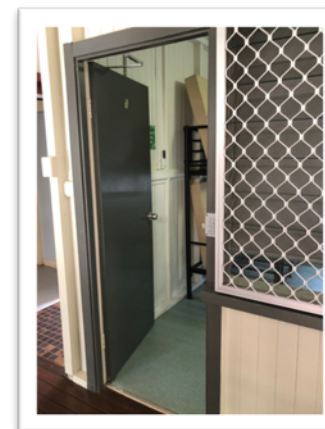
- All external doorways are adequately lit
- Internal light switches logically placed but not level with door handles

Doorways -

- Opening doorways are 760mm wide
 - Circulation space for wheelchair on both sides of doorway
- Access via ramp or steps, uncovered

Floor Surfaces -

- Suitable - non slip vinyl and timber



Entry Steps -

- 3 steps:
 - concrete and standard in tread, width, height
 - No handrail
 - No contrast, colour or texture



Ramps -

- Ramp entry
 - Surfaces firm and slip resistant in all conditions
 - Handrails and kerbs both sides
 - At least 1000mm wide
 - Gradient less than 1:20 (independent wheelchair user)



Bunk Rooms -

- Bunk beds - meet Australian standards.
 - 650mm headroom between upper and lower bunk
 - Accessible from one side only
 - Access to the length of the bunk
- Sufficient floor space to store mobility aids
- Air-conditioning and window blinds available
- Power to charge Power Wheelchair overnight

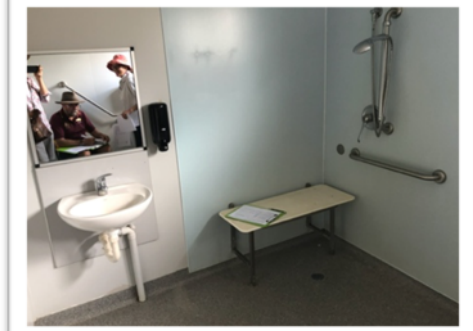


Bunks cannot be moved

- **Accessible Toilet and Shower Facilities - Unisex**
 - Doorway 850mm wide, sliding door
 - Total floor area 3160 X 2180mm - Non-slip flooring
 - Toilet/shower suitable for transfers, assisted transfers or hoists
 - Room to use shower/commode chair or change table
- Handbasin
 - mirror
 - wheelchair access under sink
 - single lever handle and tap - hot & cold identified
- Accessible Toilet
 - Standard Toilet pan and flush mechanism
 - Grab rails
 - Toilet paper next to pan
 - Sanitary unit



- Accessible Shower
 - Adjacent drying area
 - Fold down shower seat 490mm above floor
 - Horizontal & vertical shower rails 1700-1900mm above floor
 - Hot water system has moderated temperature
 - Lever tap handle 1330mm above floor
 - Temperature clearly indicated by colour
 - Shower nozzle can be hand-held or mounted
 - Soap dispenser 1250mm above floor
 - No shower curtains
 - Graded floor to drain outlet



TINAROO ENVIRONMENTAL EDUCATION CENTRE - BARRON RIVER CAMPUS



Contact Information

Address: 30/46 Tinaroo Falls Dam Rd,
Tinaroo QLD 4872
Telephone: (07) 4095 8333
Website: www.tinarooec.org.au

Forayth Business Solutions: (07) 3822 3665

www.foraythbusinessolutions.com.au