

## GENERAL ACCESS DESCRIPTORS - TINAROO EEC - BLACK GULLY CAMPUS

### Car/coach set down -

- outside facility grounds and adjacent to accessible building entrances
- accessible for full distance to facility
- 5 m from entry
- adequate circulation space for wheelchair/equipment set-down
- no designated "Person with Disability" parking bays
- natural lighting only; not covered
- Lip of 20mm to entry path at main gate - alternative entry through kitchen



Main gate



Drop off



Alternate entry

### Pathways

- undefined natural pathways between buildings and outdoor activities; surfaces can be mud/sand/roots/grass/crusher dust
- mix of formed (concrete) and natural (grass) pathways between Main Building, all other buildings and facilities including student toilet blocks
- at least 1200mm wide for the full length
- smooth, firm and slip resistant in wet & dry weather
- Level with adjacent ground
- For best wheeled mobility route
  - Minimal cross slope less than 1 in 40
  - No grates or small abrupt changes in levels



### Outside Assembly/Undercover Area

- adequate lighting
- wheelchair accessible
- undercover
- concrete



## MAIN BUILDING - GROUND FLOOR - KITCHEN AND DINING

### General Lighting -

- All external and internal lighting adequate
- Switches are standard & logically placed
- Level Passageway between kitchen and storage area to access ramp to tent banks and amenities

### Floor Surfaces -

- Vinyl - non-slip (even when wet)
- Concrete - slightly textured
- Change of floor trims <3mm

### Front Door -

- External doors 850mm+ wide opening outwards
  - Adequate circulation space either side, threshold level
- Lever handles
- Ramped from outside
- Alternate accessible entry if required



### Kitchen access -

- Single door opening inwards
- 4 stairs to a small landing
  - Consistent tread height, depth and width
  - No contrast on nosings
- Handrail both sides
- Alternate ramp access available



### Kitchen -

- All benches/splashbacks are stainless steel
  - No contrast to background
  - No sharp corners on benches
- Some benches have a clear space for wheelchair access
- Servery
  - 770 mm above floor
  - No open area under for wheelchair user
- Handwash basin
  - wheelchair accessible



### Indoor dining -

- clear space to manoeuvre wheelchair around tables
- Tables allow wheelchair to be pushed underneath,
  - fixed height 740mm above ground
- Chairs have backrest, no armrest
  - All same size; 450mm seat height



## MAIN BUILDING - GROUND FLOOR - ACTIVITY STORAGE

- Level Passageway between kitchen and activity storage area
- Ramp
  - At least 1000mm wide
  - No handrails / kerbs
  - Gradient > 1:14
    - Non-standard (steeper) for assisted wheelchair user
  - Surface is concrete - firm, slip resistant, no gaps
- Floor surfaces
  - Concrete and level
- Adequate circulation space for a wheelchair



## MAIN BUILDING - FIRST FLOOR CLASSROOM

***No access for people/students with impaired mobility and wheelchair users***

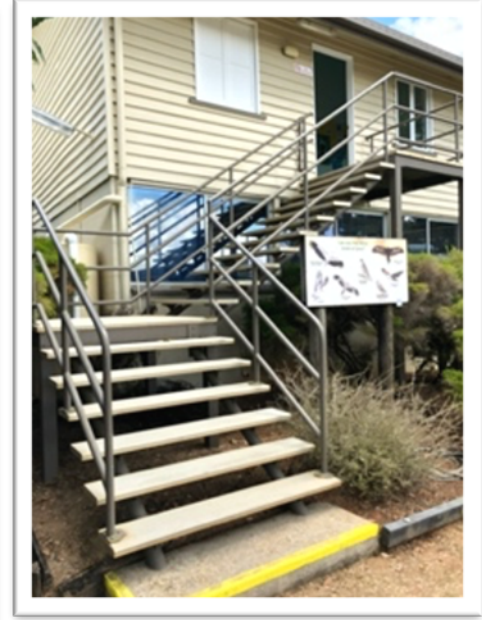
- ***Recommend lift to first floor classroom ensuring access for all***

***Exposed metal stairway***

- ***Recommend adequate protection from weather***
- ***add Contrast on all nosings***



- Access via two sets of stairs - both 2 flights.
  - A midway landing with 90 degree turn and a top landing
  - Uncovered stairway, open to weather
  - Stairs and handrails are metal
    - Become unacceptably hot in the day
    - Are slippery when wet
  - First flight 8 stairs, second flight 11 stairs
    - Stairways at least 1000mm wide
    - Tread width, height and depth consistent
    - No Contrast on nosings
    - Suitable handrails both sides
    - Sufficient light at all times

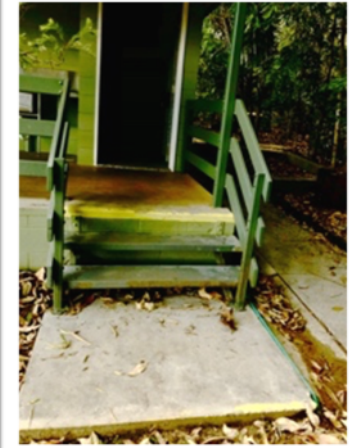
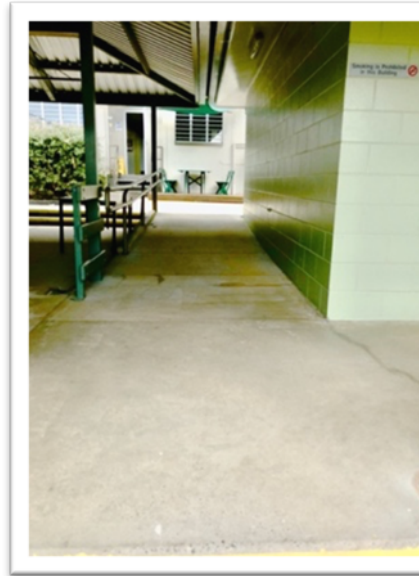


- Doorway
  - Double outward opening door 850mm wide
  - Level threshold
- Passageway
  - At least 1200mm wide - accessible to all
- Floor covering
  - Vinyl and carpet
- Classroom
  - Adequate circulation space for wheelchair
  - Clearance for a wheelchair under tables
- standard adult chairs



## TOILET/SHOWER BLOCK FOR PERSON WITH A DISABILITY

- Contrast on steps incomplete
- adequate lighting at all times
- ramp to amenities
  - < 1:20 gradient and suitable for assisted and independent wheelchair users
  - Concrete, undercover and slip resistant in all weathers
  - 1000mm wide handrail one side with solid wall on opposite side
  - No kerb
- Stair access between amenities and grassed area
  - sets of stairs at each end
  - timber
  - 3 stairs in each set
  - Handrails available
  - Contrast on steps incomplete
  - Stairs down to cement landing then to grass



- Accessible unisex
  - Adjacent to key areas
  - door inward opening 850mm wide, circulation space both sides
    - occupied indicator on door
  - Floor area is 2400mm x 2400mm

- Toilet
  - Standard pan & flush
  - Grab rails
  - toilet paper
  - no permanent sanitary unit
    - available in girls' toilet

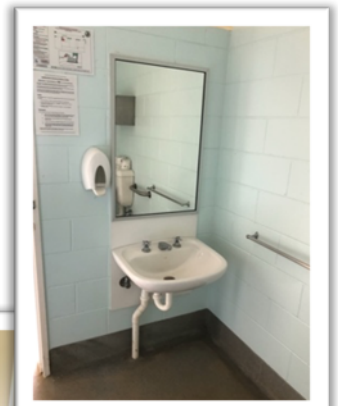
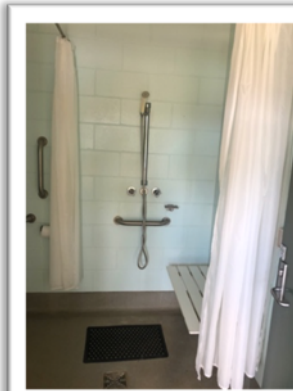


- Shower

- preformed cubicle (600mm x 760mm) with integrated hob (height= 220mm from outside, 130mm inside)
- capstan tap handles between 900mm and 1100mm above floor level
- shower curtain (not weighted)
- fold down shower seat
- soap dispenser
- overhead shower nozzle able to be handheld
- grab rails
- no hob - graded floor
- adjacent drying area 1600mm x 1200mm
- rubbish bin

- Hand basin

- common outlet, capstan handles
- soap dispenser
- mirror
- towel rail
- hooks behind door



## ACCOMMODATION - TENTS

- Tent banks accessible across mown lawn
- Visitors in a wheelchair can stay in a tent and store their chair in annex overnight
- 6 person tents (usually 3 or 4 students and their gear)
- Alternative accommodation can be arranged if tents are not suitable





# TINAROO OUTDOOR EDUCATION CENTRE - BLACK GULLY CAMPUS



Contact Information

Address: Black Gully Road  
Tinaroo VIC 3670  
Phone: 03 572 4872  
Email: [info@tinaroooutdoor.com.au](mailto:info@tinaroooutdoor.com.au)

Copyright Business Business (B7) 2022 2022

[www.tinaroooutdoor.com.au](http://www.tinaroooutdoor.com.au)